

Healthcare / Refurbishment

Key Features:

- » New workshops, storage areas and offices
- » Delivered during COVID-19
- » Adjacent Nursery safeguarded



Appointed by the Trust during the COVID-19 pandemic, we were responsible for the safe delivery of these frontline works to provide a new workshop, storage and associated offices space.

As well as this internal alteration to the existing MRI building, we were tasked with several external works. This included:

- » Extension to the existing pedestrian footpath.
- » Installation of secured metal fencing, with access control gates linked to the Trust fire alarm system.
- » Installation of lockable fencing in timber for waste bin storage.

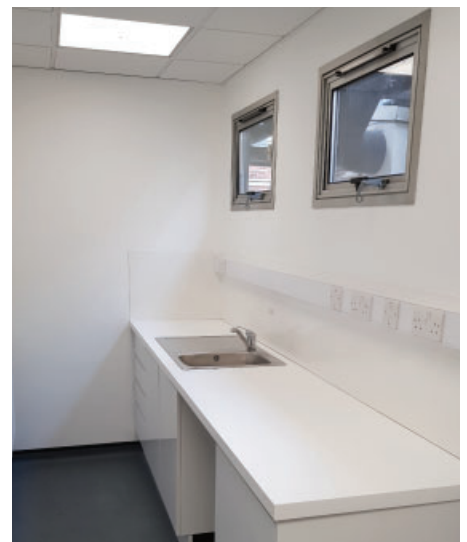
Throughout our delivery, we had to maintain the live services to the adjacent Main Hospital Building. Through early engagement, robust planning and a clear sign-off process with the Trust Engineering/Maintenance Team, we ensured services remained live to critical areas throughout our works.

Adjacent Safety Critical Facilities

Owing to the works area location, we had to ensure a robust safety, segregation and disruption plan to an adjacent nursery, as well as the Hospital.

Situated adjacent to the service yard area connected to our site, we mitigated through a robust construction safety and traffic management plan. This was continually reviewed with the Estate and Nursery contacts to ensure the plan was effective.

Critical to this plan was also mitigating for the complex Hospital estate. The successful execution of this plan was fundamental in mitigating disruption to the shared access route we used for site deliveries, which also serviced Hospital shipments. At all times, the Hospital was given priority, with all deliveries booked at suitable times for the Estate Team.



Client:	South London and Maudsley NHS Foundation Trust
Project Value:	£400,000
Programme Duration:	12 weeks
Architect:	Fulkers Bailey Russell
Quantity Surveyor:	WT Partnership